



© Gábor Máté

The last house of the street is located at the perimeter of the suburb, in the neighbourhood of a forest. The so called Black U is named by the owner's son after its colour and shape.

The U-shaped prism was raised on the plot and the top was just carved away with a single sweep. The roof is covered with a nearly black zinc-plate, the walls are covered with brick. Here and there the zinc-plate overlays the wall to substitute the bricks with a scaly armour. The Danish brick has a special colour between deep black and dark chocolate brown. Its texture resembles a million-years old trunk as well as kneaded dough. Due to the dark grey granules added to the jointing that is flush with the wall, the facades of the building have a homogeneous surface.

The building has an introverted attitude to its environment. The house is faced to the courtyard but opens one side towards the forest. Hiding from the street, it gives the picture of a single storey house, though it is two-three storied in the inside. The inner and external formations are in close connection as the U-shaped form and the diagonal plan of the roof are permanently determine the inner space. The garden is separated into two distinct parts – the courtyard hides a Japanese garden while the lowest floor is enclosed by a crater-shaped rockery. (according to architect's text)

Black U

Budapest, Ungarn

ARCHITEKTUR
T2a Architects

TRAGWERKSPLANUNG
Materv Kft

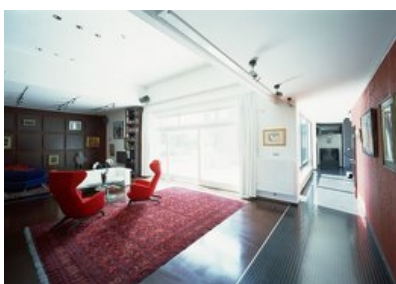
ÖRTLICHE BAUAUFSICHT
József Titz

LANDSCHAFTSARCHITEKTUR
Garden 2000 Kft

FERTIGSTELLUNG
2006

SAMMLUNG
Architekturarchiv Ungarn

PUBLIKATIONSdatum
23. August 2009



© Gábor Máté



© Gábor Máté



© Gábor Máté

Black U

DATENBLATT

Architektur: T2a Architects (Gábor Turányi, Bence Turányi)

Tragwerksplanung: Materv Kft

Landschaftsarchitektur: Garden 2000 Kft

örtliche Bauaufsicht: József Titz

Fotografie: Gábor Máté

Interior design - Nóra Takács

Funktion: Einfamilienhaus

Fertigstellung: 2006



© Gábor Máté



© Gábor Máté



© Gábor Máté

Black U

