



© Margherita Spiluttini

In the first step of the infrastructural expansion for machinery of the Theiss power-station, a kind of chassis was needed that primarily had to comply with engineering rather than architectural parameters. Varied parts of machinery by different manufacturers had to be brought under one roof. The heterogeneous structure created by this situation required an architectural intervention. Paul Katzenberger's design is a precise work with clear objects, colors and materials.

The design process of this project reverses the usual architectural process: already existing structures and forms had to be integrated after the fact. The architect says of his project: „An industrial object of this size involuntarily defines its environment, its utilitarian purpose notwithstanding. This, along with the physical and technical restrictions forms the basis of the formal possibilities.“

He describes the Theiss power-station as a „paradoxically very sculptural architecture, in which color and object have primary functions.“ (Text: Marion Kuzmany)

Kalorisches Kraftwerk Theiss

Ludwig-Bruckner-Straße 1
3494 Gedersdorf, Österreich

ARCHITEKTUR
Architekt Katzenberger

BAUHERRSCHAFT
EVN AG

TRAGWERKSPLANUNG
**Reinhard Klestil
Bernd Toms**

FERTIGSTELLUNG
2000

SAMMLUNG
Architekturzentrum Wien

PUBLIKATIONSdatum
14. Juni 2002



© Margherita Spiluttini



© Margherita Spiluttini



© Margherita Spiluttini

Kalorisches Kraftwerk Theiss

DATENBLATT

Architektur: Architekt Katzberger (Paul Katzberger, Karin Bily)

Bauherrschaft: EVN AG

Tragwerksplanung: Reinhard Klestil, Bernd Toms

Fotografie: Margherita Spiluttini

Kunst am Bau: Sol LeWitt

Funktion: Industrie und Gewerbe

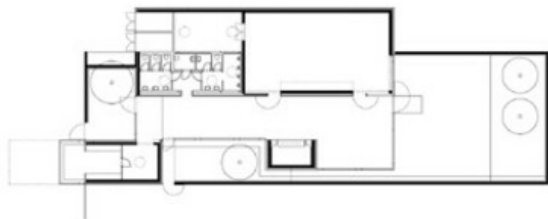
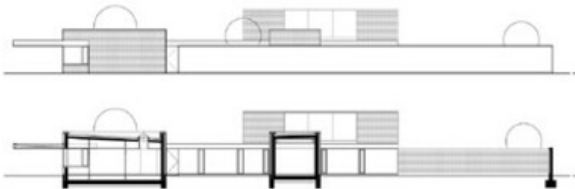
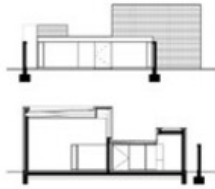
Planung: 1995

Ausführung: 1997 - 2000



© Margherita Spiluttini

Kalorisches Kraftwerk Theiss



Projektplan