



© Miran Kambi?

This monolithic building, with its longitudinal volume located along a large green area and the road, is comprised of the main building and two wings. The central building is intended for all of the main common areas of the school (a large lecture theatre, the teachers' office with the school administration and, above, the library). In this part the building is as transparent as possible, hinting at the life inside and behind the building, where the school yard is transformed into a genuine school park with a lot of greenery. The wings host classrooms: the east wing containing classrooms for general subjects, and the west wing those for specialised subjects. In order to leave the space behind the school as untouched as possible, the east wing also hosts a series of gymnasiums and changing areas. The walls dividing the classrooms above the gymnasium also function as the „supports“ for the large span across the gymnasium.

## Medical Secondary School

Poljanska cesta 61  
1000 Ljubljana, Slowenien

ARCHITEKTUR  
**Atelier Jurij Kobe**

BAUHERRSCHAFT  
**Ministrstvo za šolstvo in šport**

FERTIGSTELLUNG  
**1998**

SAMMLUNG  
**Architekturarchiv Slowenien**

PUBLIKATIONSdatum  
**19. März 2006**



## Medical Secondary School

### DATENBLATT

Architektur: Atelier Jurij Kobe

Mitarbeit Architektur: Maja Ivanič, Lenka Kavčič, Sandra Fatur

Bauherrschaft: Ministrstvo za šolstvo in šport

Fotografie: Miran Kambič

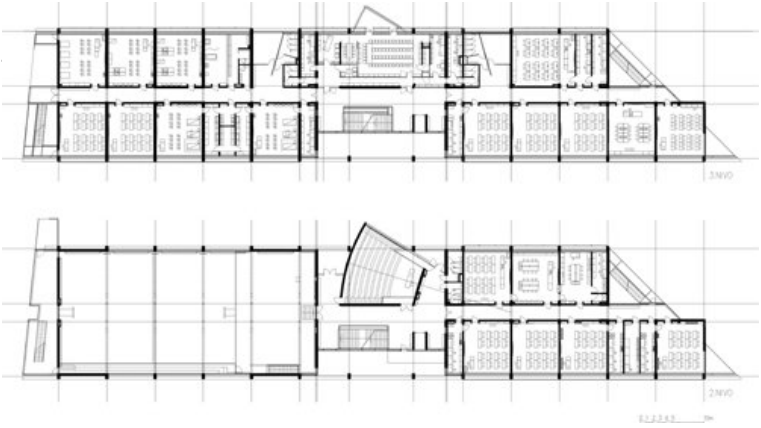
Funktion: Bildung

Wettbewerb: 1995

Planung: 1996 - 1998

Ausführung: 1996 - 1998

Medical Secondary School



plan