



© Ján Studený

Weekend house in Senec

Senec, Slovakia

ARCHITEKTUR
Ján Studený

FERTIGSTELLUNG
2006

SAMMLUNG
Architekturarchiv Slowakei

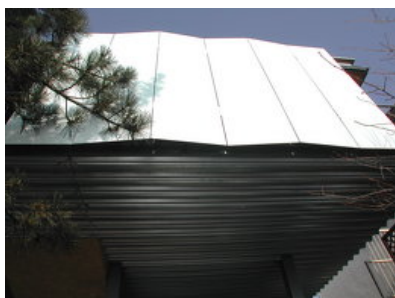
PUBLIKATIONSdatum
27. Oktober 2008



Reconstruction of the weekend house in Senec

Numerous weekend houses have been constructed recently in the summer resort near Sun Lakes in Senec. Experimental or atypical architectural solutions are easier to apply in seasonal dwelling. It is this type of architectural design that attracts attention of the architect Ján Studený. He already constructed a weekend house in the lake area in Senec together with his Czech colleague David Kopecký. Studený recently returned there to reconstruct the older weekend house on his own. Similarly to the previous design, the author developed the concept of a light construction elevated on the pillar that allows optional opening and closing of the external part. This time, however, the solution is less temporal.

The construction is connected with the ground only by means of a narrow vertical communicational core that provides an entrance to the main dwelling space on the ground floor. Two-folded sheathing presents a remarkable detail. Glass wall following the rhomb perimeter of the ground-plan is integrated into the rectangular sheathing consisting of the deals sprawling in accordion manner. This exterior sheathing serves as window blinds that shutter the house during the occupants' absence. The optional protective and shielding functioning and the design on the whole, as well as material solution of the building present a superior example of the works of the architect belonging to the most inventive Slovak architects at present. Peter Szalay



© Ján Studený



© Ján Studený

Weekend house in Senec

DATENBLATT

Architektur: Ján Studený

Mitarbeit Architektur: Martin Vojta

Funktion: Sport, Freizeit und Erholung

Planung: 2002 - 2004

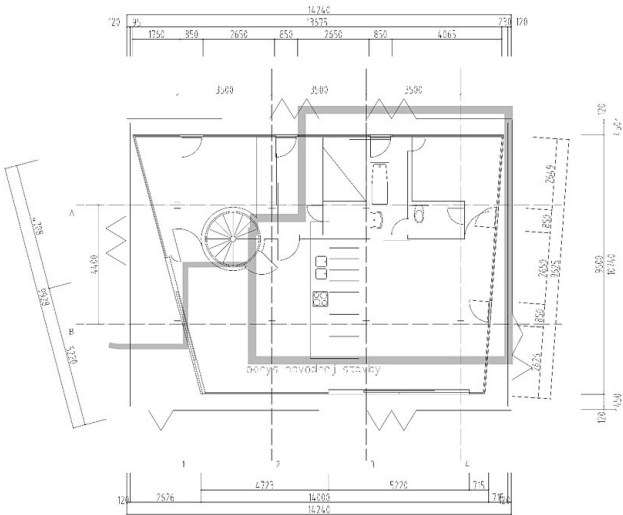
Ausführung: 2004 - 2006

Nutzfläche: 185 m²

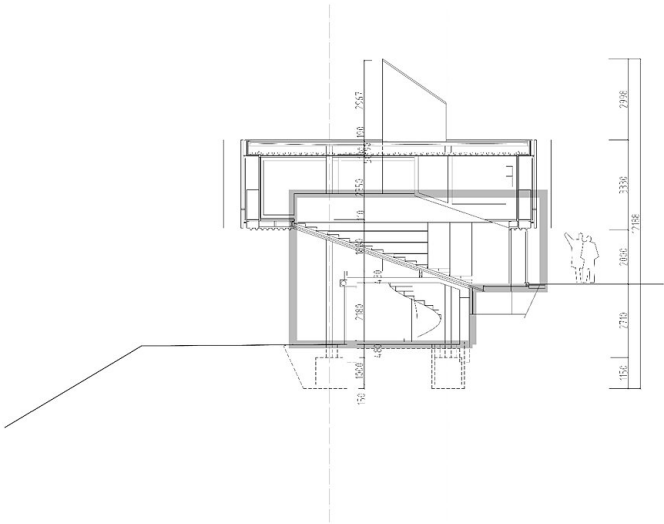
AUSFÜHRENDE FIRMEN:

contractor: Ing. Pleva

Weekend house in Senec



Plane



Section