



© Zsolt Batár

The building is part of a huge real estate development (retail, office and residential functions); 61 flats have been build, the size of them is around 70-80 square meters. All apartments have large and open facades and all have a well-utilizable, covered terrace - loggia. The flats can be reached through two vertical transportation cores, which are placed in the two breakpoints of the U-shaped building. Open side corridors head from the staircases as we considered it useful that in this way the flats could be naturally ventilated from two directions and besides they could be reached in a friendly manner, similar to the tradition we can chat with our neighbours on the corridor. The open corridors face the miscellaneous internal garden and the overgrown green-wall. We made the internal garden visible for the external observers, too. The southern wings are placed on V shaped legs and through this semi covered public area the building and the city can contact each other. The ground floor of the building make place for services, shops, pharmacy and a coffee shop; on the top of the building among the roof-gardens, in four separate white pavilions, we developed five peculiar penthouse flats surrounded only by glass-walls.

The most important material of the external facade is coloured (emalit) glass. Yellow, orange, red, green, dark green, blue turquoise and dark blue. They are vivid and bright colours. Each colour of the facade belongs to a flat; this colour then appears on the entrance door – therefore the mark of the flat becomes visual- and makes trivial the identification.

The large openings of the facade are shaded by aluminium louvres; beside of the sun protection, the additional advantage is that they allow the light in, therefore, they serve as an excellent, and personalised visual filter. Certainly the colour of the lamellas is the same to the given flat – if all louvres are down, the building becomes a real box built by colourful Lego cubes.

The facade was rounded at the corner of Bercsenyi- and Vali Street by a gesture that evokes the architecture of the 1930th, such a rhythm of the facade boxes appears in many modern apartments of the surroundings that were built in the 1960th. Therefore the building cherishes close relationship with the modern heritage, and we have tried to create a continuously changing building that is highly responsive to all parts of the day in everyday use. (architects' text)

## Simplon court

Váli u. 5.  
1111 Budapest, Ungarn

ARCHITEKTUR  
**T2a Architects**

BAUHERRSCHAFT  
**ING Real Estate Development Ltd**

TRAGWERKSPLANUNG  
**Dinám Kft**

LANDSCHAFTSARCHITEKTUR  
**Gardenworks Kft**

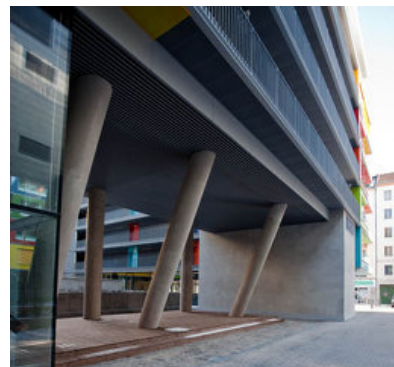
FERTIGSTELLUNG  
**2009**

SAMMLUNG  
**Architekturarchiv Ungarn**

PUBLIKATIONSdatum  
**10. März 2010**



© Zsolt Batár



© Zsolt Batár



© Zsolt Batár

**Simplon court**

## DATENBLATT

Architektur: T2a Architects (Gábor Turányi, Bence Turányi)

Mitarbeit Architektur: Péter Márk, László Nyitray, Éva Pinczés, Dénes Regőczy, Levente Skultéi

Bauherrschaft: ING Real Estate Development Ltd

Tragwerksplanung: Dinám Kft

Mitarbeit Tragwerksplanung: Róbert Gecsényi

Landschaftsarchitektur: Gardenworks Kft (Tarcsányi Judit)

Facade constructions - János Bikádi, Balázs Galambos (Alufe Kft)

Building technology - Lajos Gábor Takács (Takács Tetra Kft)

Funktion: Wohnbauten

Planung: 2007 - 2009

Ausführung: 2008 - 2009

Eröffnung: 2009

Grundstücksfläche: 2.480 m<sup>2</sup>

Bruttogeschossfläche: 6.570 m<sup>2</sup>

Bebaute Fläche: 1.285 m<sup>2</sup>

## PUBLIKATIONEN

Octogon 2010/2

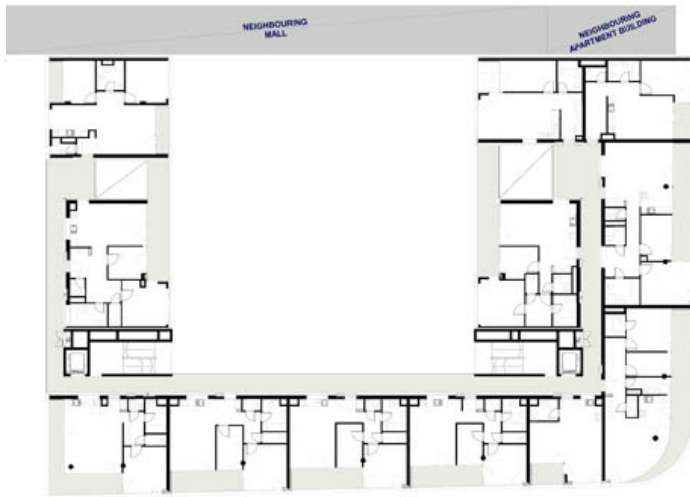
Metszet 2010/2

## AUSZEICHNUNGEN

CIJ Awards Hungary - Best Residential Development 2009



© Zsolt Batár



Simplon court

3rd floor plan