



© Dagmar Slámová

Tatra city is the second piece of architecture designed by architect Ľubomír Závodný on the recently heavily urbanized Einstein street in Petržalka. Already his Department store Atrium showed that the traffic belt isolating Petržalka from the Danube river bank on north is not necessarily a barrier to quality architecture at all. TatraCity creates a larger urban block with horizontal body and three articulated towers of maximum 15 and 19 floors. The highest administrative tower becomes a point of orientation from east while the housing volumes cultivate the existing urban landscape. Peter Szalay

## TatraCity administrative and residential complex

Ľermiševského 40, 42, 44, 46  
Bratislava, Slovakia

ARCHITEKTUR  
**Ľubomír Závodný**

FERTIGSTELLUNG  
**2009**

SAMMLUNG  
**Architekturarchiv Slowakei**

PUBLIKATIONSdatum  
**7. Mai 2010**



© Dagmar Slámová



© Dagmar Slámová

**TatraCity administrative and  
residential complex**

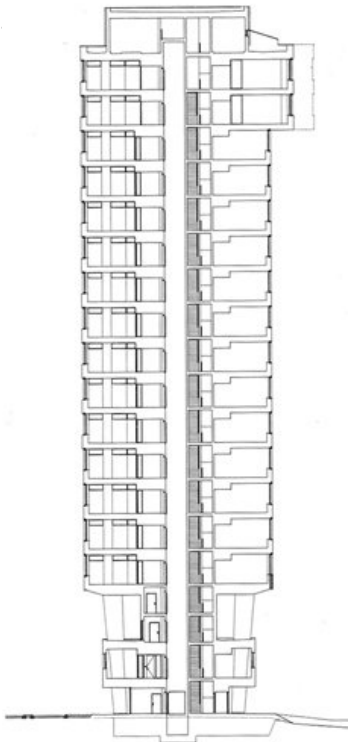
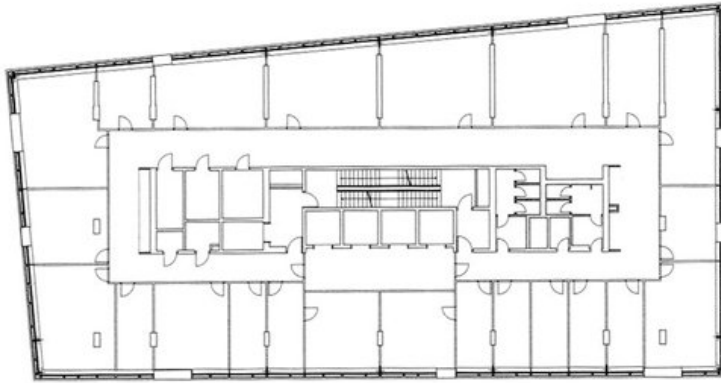
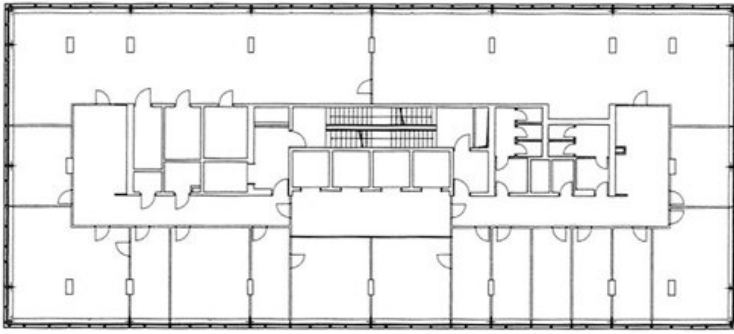
DATENBLATT

Architektur: Ľubomír Závodný

Funktion: Gemischte Nutzung

Planung: 2005 - 2007

Ausführung: 2007 - 2009

**TatraCity administrative and  
residential complex**

L\_media/big/1273144393.jpg