



© Hisao Suzuki

Arcadia Lightware office and exhibition building

Tržaška cesta 222
1000 Ljubljana, Slowenien

ARCHITEKTUR
Sadar Vuga arhitekti

BAUHERRSCHAFT
Arcadia d.o.o.

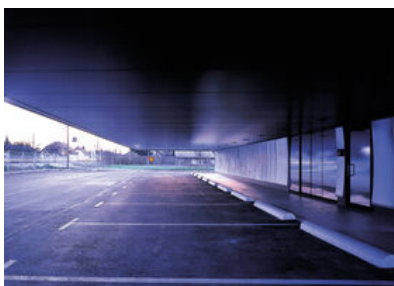
FERTIGSTELLUNG
2000

SAMMLUNG
Architekturarchiv Slowenien

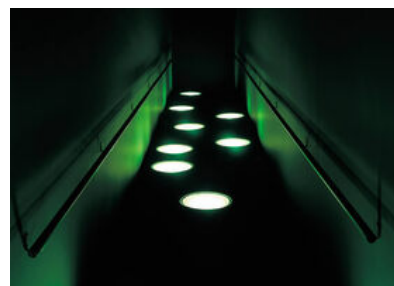
PUBLIKATIONSdatum
05. März 2006



The company deals with the production and sale of lighting appliances. In the chaotic environment on the outskirts of the city, where commercial buildings of all kinds and forms, and with no particular value, are being erected, the architects designed an administrative premises and showroom which stands out from the average due to its unusual concept. From the street, we notice only the black volume, hanging over the parking area. A feature is the concept following the principle of film editing, which enables the visitor to experience the building as a sequence of well-considered, edited spatial events. The visitor enters the building through the facade which opens automatically, inviting one to continue along the path through the interior. The visitor follows the dark ascending ramp, lit from the side, leading to the hall on the first floor. This is a multipurpose windowless hall where it is possible to test different forms of artificial light. The path, this time lit from the side, continues and leads to a scenic platform in the form of a bridge, hanging over the hall and leading to the terrace. Finally one reaches a compartment with glazed walls intended for business meetings. The rear of the building is a single concrete block with a warehouse and a spacious office.



© Hisao Suzuki



© Hisao Suzuki



© Hisao Suzuki

**Arcadia Lightware office and
exhibition building**

DATENBLATT

Architektur: Sadar Vuga arhitekti

Bauherrschaft: Arcadia d.o.o.

Fotografie: Hisao Suzuki

Dimitrij Mirah, Simona Muc

Funktion: Gemischte Nutzung

Ausführung: 1999 - 2000

Grundstücksfläche: 1.415 m²

Nutzfläche: 637 m²

Bebaute Fläche: 1.460 m²

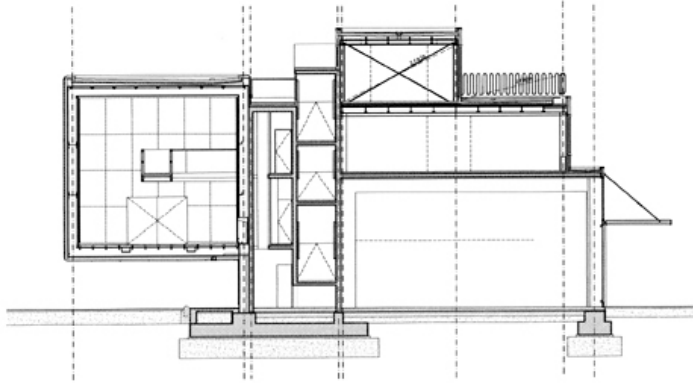
Baukosten: 1.000.000,- EUR



© Hisao Suzuki

17.jpg

Arcadia Lightware office and exhibition building



section