



© Miran Kambi?

The residential complex is located in the direct vicinity of Plečnik's St. Francis of Assisi Church in the town district of Šiška. The architects let the church retain its dominant role, using it as a scenic backdrop for their own design. The two blocks of flats are positioned so as to create an intermediary garden space, which serves as a focal point for the complex, and as a filter between the two blocks. The residential complex, indeed the whole neighbourhood, is completely removed from the traffic, and parking is organised in the basement. It is recognisable above all for its facade: the warm colours of the earth and the regular, while at the same time varied, geometrical fenestration make a strong impression. The architects tried to control the material image of the buildings by developing a single facade detail (window - facade cladding - sun-protection), which is repeated in variations all over the building.

## Residential complex at Šiška

Aljaževa ulica  
1000 Ljubljana, Slowenien

ARCHITEKTUR  
**Bevk Perovič arhitekti**

BAUHERRSCHAFT  
**Rudis Trbovlje**

FERTIGSTELLUNG  
**2001**

SAMMLUNG  
**Architekturarchiv Slowenien**

PUBLIKATIONSdatum  
**26. Februar 2006**



## Residential complex at Šiška

### DATENBLATT

Architektur: Bevk Perovi? arhitekti (Matija Bevk, Vasa J. Perovi?)

Mitarbeit Architektur: Mitja Zorc, Jernej Bevk, Jana Kocbek

Bauherrschaft: Rudis Trbovlje

Fotografie: Miran Kambi?

Maßnahme: Neubau

Funktion: Wohnbauten

Ausführung: 1999 - 2001

Bruttogeschossfläche: 3.000 m<sup>2</sup>

### PUBLIKATIONEN

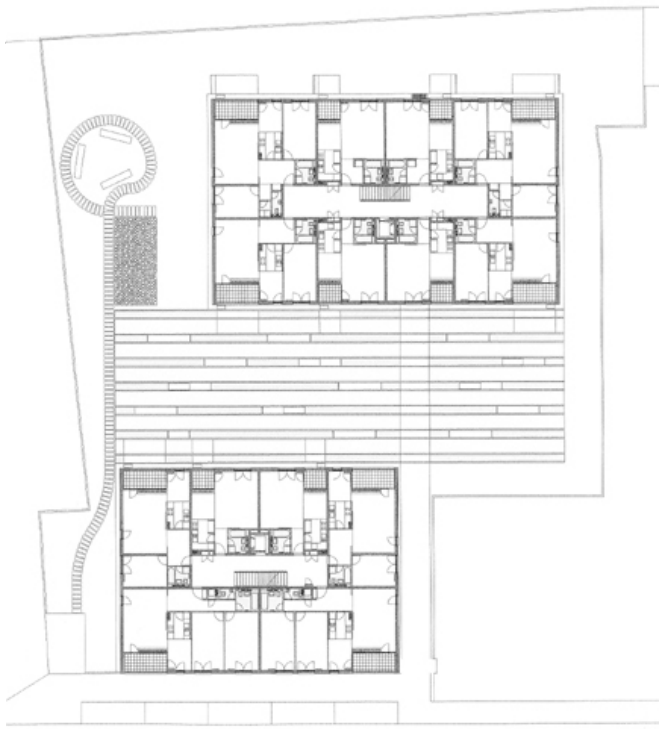
Architektur aktuell, No. 5/2002, May 2002

In nextroom dokumentiert:

Matevž Celik: New Architecture in Slovenia, SpringerWienNewYork, Wien 2007.

### AUSZEICHNUNGEN

Ple?nik's Award 2002



39402013.jpg

Residential complex at Šiška

situation ground floor