



© Miran Kambi?

The location is defined by the natural forest landscape. The typology of the building is derived from a decomposed introverted structure - two U-shaped volumes, turned back-to-back facing the outside, connecting with the surroundings. The entry part of the volume which faces north, closer to the road, is intended for the semi-public activities of the school, while the second part of the complex is intended for classrooms and faces south, towards the greenery. The school is a rational, productive and generic system, located in a natural environment, so that it subconsciously creates a certain degree of symbiosis - a second nature.

Elementary School „Ob Rinži“

Cesta v Mestni log 39
1330 Kočevje, Slowenien

ARCHITEKTUR

Nicholas Dodd

Tadej Glažar

Arne Vehovar

Vasa J. Perovič

BAUHERRSCHAFT

Community of the Town of Kočevje

LANDSCHAFTSARCHITEKTUR

Ana Kučan

FERTIGSTELLUNG

2002

SAMMLUNG

Architekturarchiv Slowenien

PUBLIKATIONSDATUM

19. Februar 2006



Elementary School „Ob Rinži“

DATENBLATT

Architektur: Nicholas Dodd, Tadej Glažar, Arne Vehovar, Vasa J. Perovi?

Mitarbeit Architektur: Matija Bevk, Božo Rozman, Gašper Zalar

Bauherrschaft: Community of the Town of Ko?evje

Landschaftsarchitektur: Ana Ku?an

Fotografie: Miran Kambi?

Maßnahme: Neubau

Funktion: Bildung

Wettbewerb: 1996

Planung: 1996 - 2002

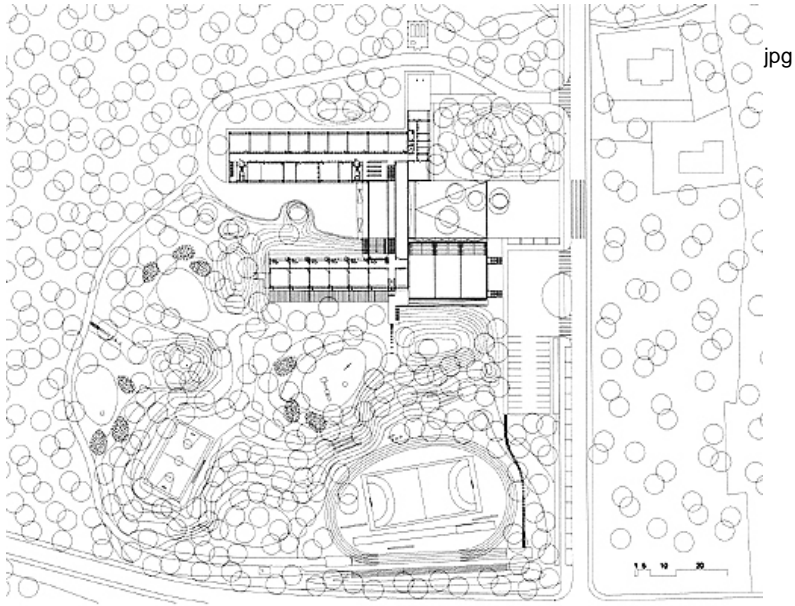
Fertigstellung: 2002

Bruttogeschossfläche: 5.500 m²

Baukosten: 3,5 Mio EUR

AUSZEICHNUNGEN

Piranesi Prize 2002, Ple?nik's Prize 2003



Elementary School „Ob Rinzi“

site plan