



© Miran Kambi?

As always when building in a protected zone, the architect had to deal with the regulations on how local architecture should look. Its present form was defined in the past by technological limitations, but these traditional forms are now frozen for the future. The tourist resort Livek, however, proves that with a little inventive spirit one can adopt a creative approach to solving the problems of protected areas. The cluster of huts is, in fact, misleading. The entire surface they stand on is hollowed out, intended for additional rooms and a swimming pool, opening towards the surroundings on the edge of this artificial plateau. The architectural language is pure, clear and schematic. Today's middle class want to enjoy contemporary design even when on a holiday!

## Nebesa mountain retreat

Livek 39  
5222 Kobarid, Slowenien

ARCHITEKTUR

**REAL Engineering d.o.o.**

BAUHERRSCHAFT

**Nebesa**

FERTIGSTELLUNG

**2004**

SAMMLUNG

**Architekturarchiv Slowenien**

PUBLIKATIONSdatum

**12. Februar 2006**



## Nebesa mountain retreat

### DATENBLATT

Architektur: REAL Engineering d.o.o. (Rok Klanjšek, Klemen Pavlin, Aljaž Lavri?)

Mitarbeit Architektur: Matevž Frančič, Irena Brečelj

Bauherrschaft: Nebesa (Bojan Roš, Maja Roš)

Fotografie: Miran Kambič

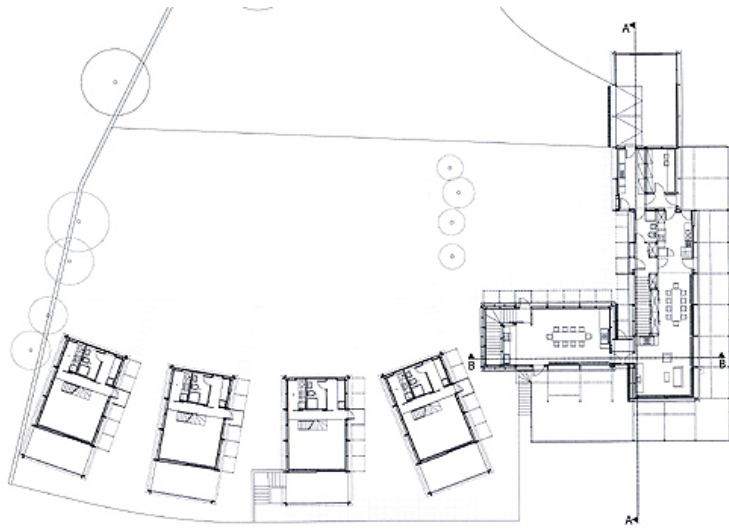
Funktion: Sport, Freizeit und Erholung

Planung: 2002 - 2004

Ausführung: 2002 - 2004

### AUSZEICHNUNGEN

Plečnik's Medal 2004



jpg

**Nebesa mountain retreat**

plan lower floor