



© Matevž Paternoster

The residential house is located on the edge of a housing estate bordering the forest. To provide a view of the forest, the architects designed the daytime rooms on the first floor. The ground floor thus houses the carport, the entrance lobby and the bedrooms, overlooking a closed patio. Above the bedrooms, on the roof, there is a spacious terrace in front of the living room. The long living room faces the forest through the entirely glazed wall, while light –belt, positioned high on the wall, allows enough light into the rooms, but prevents a view of the neighbouring houses. The building has wooden cladding, continuing into the roof.

## House Blejec

Pot v smrežje 28A  
1000 Ljubljana, Slowenien

ARCHITEKTUR  
**Bevk Perovič arhitekti**

BAUHERRSCHAFT  
**Gašper Blejc**

FERTIGSTELLUNG  
**2004**

SAMMLUNG  
**Architekturarchiv Slowenien**

PUBLIKATIONSDATUM  
**12. Februar 2006**



## House Blejec

### DATENBLATT

Architektur: Bevk Perovi? arhitekti (Vasa J. Perovi?, Matija Bevk)

Mitarbeit Architektur: Blaž Kandus

Bauherrschaft: Gašper Blejc

Maßnahme: Neubau

Funktion: Einfamilienhaus

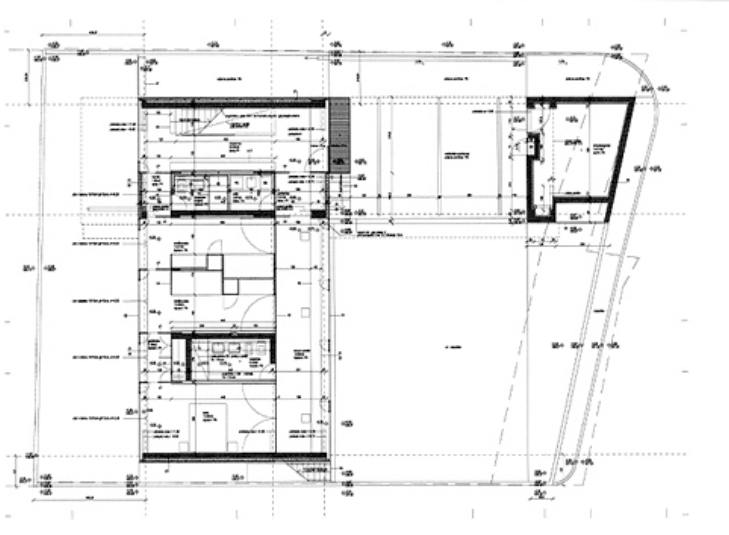
Planung: 2003

Ausführung: 2003 - 2004

### PUBLIKATIONEN

Architektur + Wettbewerbe Raffinierte Einfamilienhäuser, Karl Krämer Verlag, Stuttgart.

Matevž Celik: New Architecture in Slovenia, SpringerWienNewYork, Wien 2007.



jpg

House Blejec

ground floor