



© Blaž Budja

The Secondary Medical School, Celje

Ipavčeva ulica 10
Celje, Slovenien

ARCHITEKTUR
Ravnikar Potokar, d.o.o.

FERTIGSTELLUNG
2005

SAMMLUNG
Architekturarchiv Slovenien

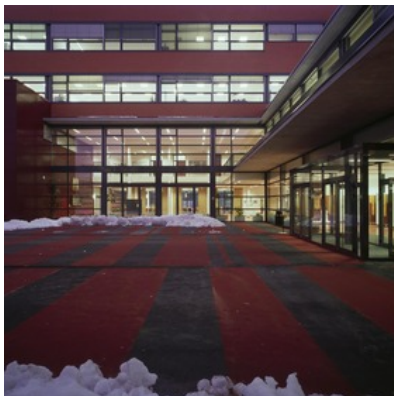
PUBLIKATIONSdatum
14. Januar 2007



The Celje Medical Highschool is located in an area where different geometries of the nearby town quarters come together. The geometry of the newly designed school is not a continuation of a certain subsistent geometry, but originates rather from the lack of any dominant space feature that would serve it as a base. The chosen concept is based on the parameters typical of a school building as well as the available plot's dimensions. The only line in space that the complex of the school system takes into account is the Ipavčeva Street. In the exterior disposition, the Ipavčeva Street as the highest quality space component turns into a promenade for pedestrians, having an internal supervised parking place for the staff. The new promenade offers a view of the symbols of Celje, i.e. the Celje Castle and St. Mary's Church, which can be seen at the back of the perspective and connect the newly created space, visually as well as thematically, to the city centre.

The building is formed in the shape of the letter U, whose sides are a classroom tract, a central cloakroom with administration board and a tract of a gym with dressing rooms in the shelter area. The classroom tract itself is composed of two longitudinal building volumes (connected by a line of communications) that at some distance follow the building line. This school square is connected with a tree-planted walk along the Ipavčeva Street that passes the gym tract and ends at the outer sports grounds. From the side of the Ipavčeva Street, the school square turns into a space limited on the right by a green wall of the shelter and gym, on the left a space intended for different activities is created, and in the axis, through the filter of the dressing rooms, the square is optically connected with the green area by the primary school and kindergarten.

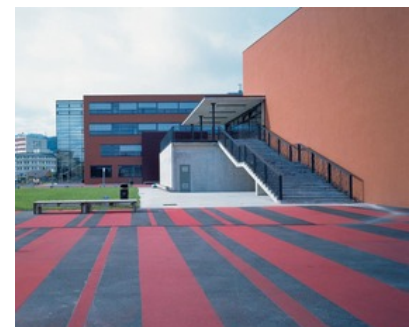
Compactness of the more solid part of the composition ends with the gym, which the volume of the whole school building flows into and which at the same time represents a sequence – a passage from a full space, i.e. the classroom tract, over the gym to an



© Blaž Budja



© Blaž Budja



© Blaž Budja

The Secondary Medical School, Celje

open space of the outer grounds. The dimensions of the space intended for different activities are determined by the volume of a lecture room taken out of the ordinary height of the classrooms; besides showing its particularity among the uniformed classrooms, it also establishes a transverse sequence in the longitudinal space of the school square.

DATENBLATT

Architektur: Ravnikar Potokar, d.o.o.

Mitarbeit Architektur: Tanja Košuta, Blaž Budja, Janez Brežnik

Funktion: Bildung

Wettbewerb: 2002

Planung: 2003 - 2004

Ausführung: 2004 - 2005

Eröffnung: 2005

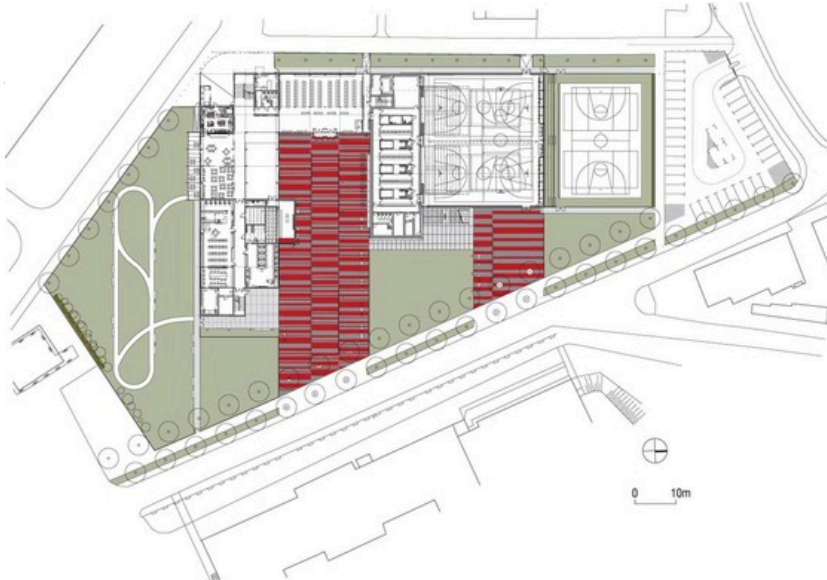
Grundstücksfläche: 11.000 m²

Nutzfläche: 6.000 m²

Baukosten: 7,0 Mio EUR

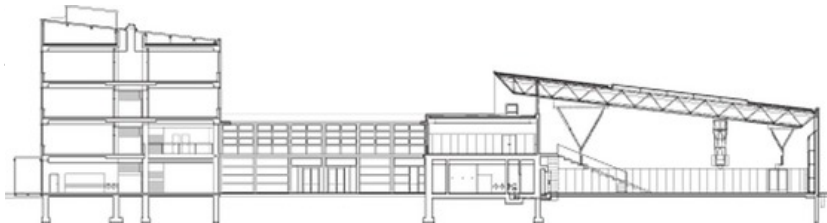
PUBLIKATIONEN

Piranesi 21/22, year 2005



The Secondary Medical School, Celje

The secondary medicinal highschool situation



The secondary medicinal school 02