



© Milan Pajk

Mixed use kompleks on Železna cesta in Ljubljana

Železna cesta
1000 Ljubljana, Slovenien

ARCHITEKTUR

Arhe

Mojca Švigelj ?ernigoj

Andrej ?ernigoj

BAUHERRSCHAFT

SCT Stanovanjski inženiring

TRAGWERKSPLANUNG

Jana Vesel

Štefan Tasi?

FERTIGSTELLUNG

2004

SAMMLUNG

Architekturarchiv Slowenien

PUBLIKATIONSdatum

18. Februar 2007



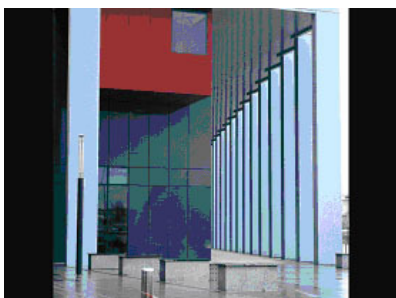
Mixed use kompleks on Železna cesta in Ljubljana (Slovenia)

Mixed use complex along Železna cesta in Ljubljana is closing the west end of Zupan?i?eva jama next to the future North Park at Navje. It consists of three separate buildings: the main apartment building, the tower and the lower office-retail building.

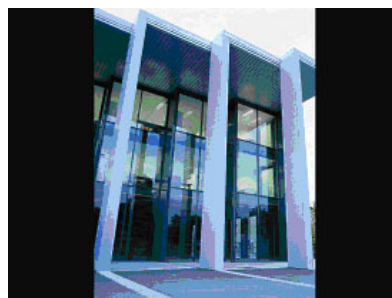
The main apartment building has a high base on which two horizontal volumes are positioned, partly cantilevered. The apartments along the whole west facade are opened towards the park and the view on Ljubljana with the Castle through wide loggias. Loggias have full height sliding shutters which are closed according to individual needs and wishes, daytime or weather, creating on the main facade an ever new composition of full-empty fields. Wooden lattice of the shutters, on the outside covered with aluminum for better weather resistance, create together with wooden wall coverings of the loggias a pleasant atmosphere of a gazebo. Penthouses with large panoramic windows and roof terraces are designed as smaller separated volumes of different heights. The east facade with its simpler design and materials reflects the residential character of the building block interior. Its large surface is broken down by randomly attached volumes of closed loggias and balconies as well as with irregular composition of colours.

The tower on the northern end of the main apartment building is residential and complements the the main square of Zupan?i?eva jama, where modern interpretations of a town gate, loggia and a fountain are already located.

The lower nonresidential building fills up the conical space between the building line of Zupan?i?eva jama, set perpendicular to the railroad and the promenade along Železna cesta, which is, based on the idea of famous town planner Max Fabiani, directed towards the Castle, visually connecting the area north of the railroad with the city centre. The nonresidential building draws attention to this important direction by its architecturally stressed arcades in a large, city scale. As an accent a red loggia is



© Milan Pajk



© Milan Pajk



© Oskar Dolenc

**Mixed use kompleks on Železna cesta
in Ljubljana**

added to the regular rhythm of the arcades on the northern end.

DATENBLATT

Architektur: Arhe, Mojca Švigelj ?ernigoj Andrej ?ernigoj

Bauherrschaft: SCT Stanovanjski inženiring

Tragwerksplanung: Jana Vesel, Štefan Tasi?

Primož Slani?, Dragica Damjani? Radi?, Aida Demšar

Funktion: Gemischte Nutzung

Planung: 1999 - 2002

Ausführung: 2002 - 2004

Grundstücksfläche: 4.715 m²

Bruttogeschossfläche: 2.545 m²

Bebaute Fläche: 24.585 m²

PUBLIKATIONEN

Arhitekturni vodnik – TRAJEKT

AB – arhitektov bilten, november 2006, ?lanek: Mestne ve?namenske stavbe, str.16,17



1171959824.jpg

**Mixed use kompleks on Železna cesta
in Ljubljana**



0 5 10 20

plan