



© Pavol Breier

Hospice of Saint Elisabeth in Žubica

Ulica Sv. Alžbety 1
05971 Žubica, Slovakia

ARCHITEKTUR
Michal Gajst,
Martin Repický

FERTIGSTELLUNG
2005

SAMMLUNG
Architekturarchiv Slowakei

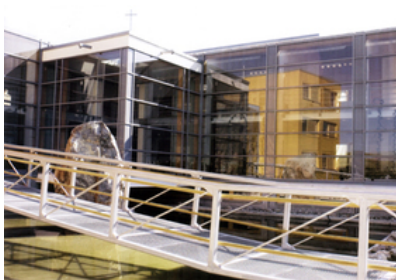
PUBLIKATIONSdatum
19. März 2007



Hospice of Saint Elisabeth is one of few buildings of this type built in Slovakia in the era of post-socialism. It is a two-winged, three floored building built on L-shape plan. The wide corridor, also a space for relax and reception of visitors, gives access to the row of rooms with basic sanitary equipment. The chapel situated in the crossing of the wings and the four floored tower for personnel located in the southern wing disrupt the monotony of the simple volume of the building.

Combination of materials and colours and the formal austerity create serene atmosphere. Large glassed facade surfaces allow views to nature and adjacent city. Landscape intervention around the building offers connection with water and maximal continuity of interior with exterior. The interior equipment and furniture is functional and minimalist in character, while the detailing of its wooden elements provide feeling of cosiness.

The quality of this architecture carefully located in its environment was rewarded the Dušan Jurkovič Prize 2005 and nomination for ARCH magazine Prize 2006. (text: Peter Szalay)



© Pavol Breier

Hospice of Saint Elisabeth in Žubica

DATENBLATT

Architektur: Michal Gaj st., Martin Repický

Funktion: Gesundheit und Soziales

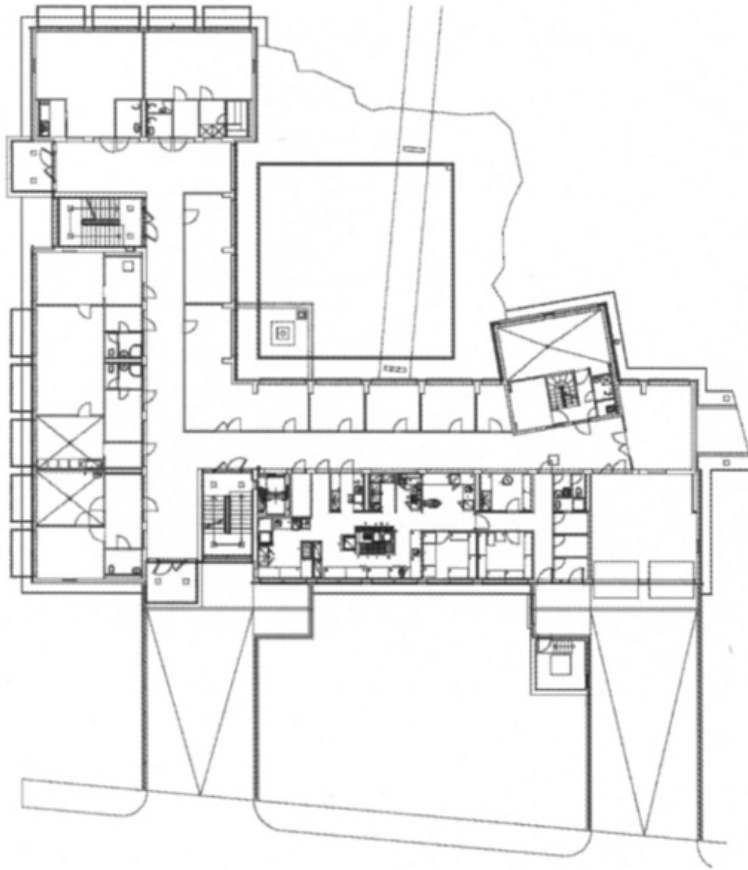
Planung: 2001 - 2002

Ausführung: 2002 - 2005

PUBLIKATIONEN

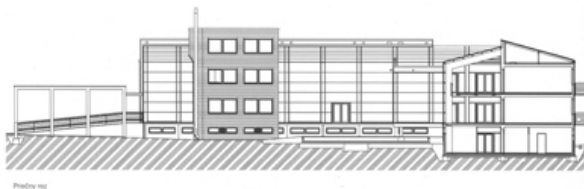
KRCHO, J.: Odpoveď architektúry na „?ím si hlavu príliš nelámeme“, ARCH o architektúre a inej kultúre, 2005, ? 9. s. 34- 39.

Hospice of Saint Elisabeth in ?ubica



Pôdorys 1. PP

Plan



im/1174302476.jpg

Section