



© Andrea Häider

## Family house extension

Zsemlye u.  
1024 Budapest, Ungarn

ARCHITEKTUR  
**sporaarchitects**

TRAGWERKSPLANUNG  
**Speciálterv Kft**

SAMMLUNG  
**Architekturarchiv Ungarn**

PUBLIKATIONSdatum  
**10. Juni 2007**



The building to be extended is the middle unit of three semi-detached houses located on a slope. The buildings were designed by architects for their own use in the 1960s, the actual house was constructed and built by the architect himself. The houses are connected by their exterior shape and the application of stone face-work. For them, the use of ashlar facing was a basic condition of the building licence, which led to spontaneously well-proportioned, ageless houses being constructed, representing a quality quite independent from the architecture of the period.

During the planning of the extension we stayed within this architectural medium. The building has been extended with a kitchen and dining room unit and has gone through internal modifications. The entrance has been moved to the street-side front. The dining room is connected to the fine backyard by a southwards orientated deck. On the street-side front the entrance can be seen through a small opening, while the larger corner window looks onto the attractive alpine garden nearby.

As for building materials, after several versions we finally decided to stick to stone face-work, combined with polished stone and wood-facing, which continues the simple handicraft style of the original house.



© Andrea Häider



© Andrea Häider



© Andrea Häider

## Family house extension

### DATENBLATT

Architektur: sporaarchitects (Tibor Dékány, Sándor Finta, Ádám Hatvani, Orsolya Vadász)

Tragwerksplanung: Speciálterv Kft (Judit Embersics)

Fotografie: Andrea Häider

Funktion: Einfamilienhaus

Planung: 2003

Fertigstellung: 2004

Grundstücksfläche: 1.182 m<sup>2</sup>

Bruttogeschossfläche: 261 m<sup>2</sup>

Nutzfläche: 182 m<sup>2</sup>

Bebaute Fläche: 109 m<sup>2</sup>

Baukosten: 87.500,- EUR

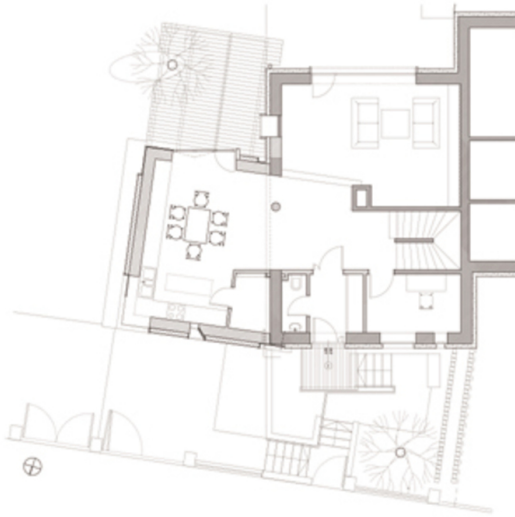
### PUBLIKATIONEN

Átrium 2004/4 17-20.o.

### AUSZEICHNUNGEN

2005 „Facade of the Year“ Special Prize

**Family house extension**



Projektplan