



© Paul Safko

Family house in Rusovce

Bratislava Rusovce, Slowakei

von Maroš Fe?ík

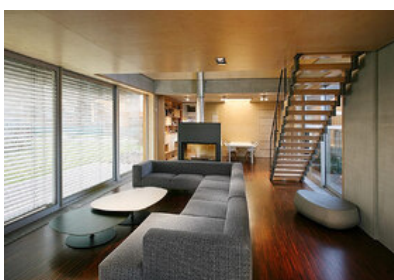
New satellite colonies of family houses around Bratislava begin to bear traces of architectural cultivation. In the village of Rusovce, there is a kind of „exhibition of contemporary housing“ being installed and signed by only a few of architects and definitely worth seeing. The plusminus architects of Maroš Fe?ík realize more than just one house here – his variations of exclusive but rational housing stand within eyeshot. The incidence of bad taste of unsigned residences in urban periphery is minimized by the growing series of family houses and semidetached houses with characteristic signature of the author. The new spatial phenomenon is the signed landscape. (Text: Maria Topol?anská)

ARCHITEKTUR
Maroš Fe?ík

FERTIGSTELLUNG
2006

SAMMLUNG
Architekturarchiv Slowakei

PUBLIKATIONSdatum
29. Juni 2007



© Paul Safko



© Paul Safko

Family house in Rusovce

DATENBLATT

Architektur: Maroš Fejčík

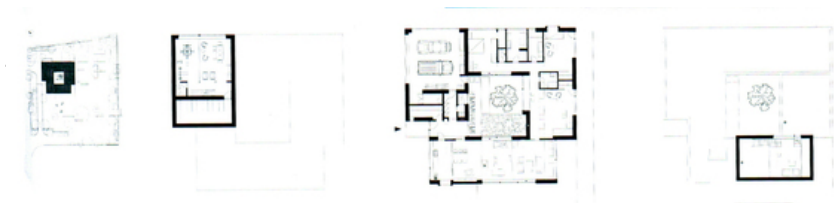
Funktion: Einfamilienhaus

Planung: 2003 - 2006

Ausführung: 2004 - 2006

PUBLIKATIONEN

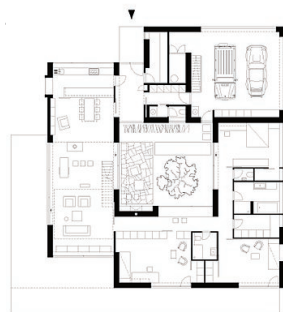
TOPOLÁNSKÁ, Mária: Dom v autorskej krajine. ARCH XII, 2007, ? 1. s. 16- 17.



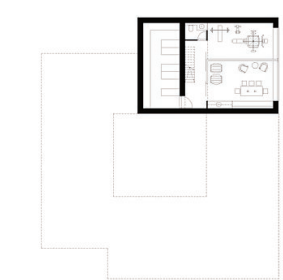
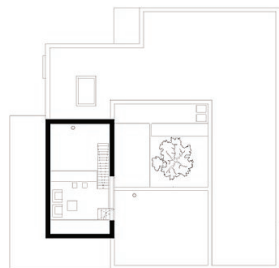
Family house in Rusovce

Ground-plans

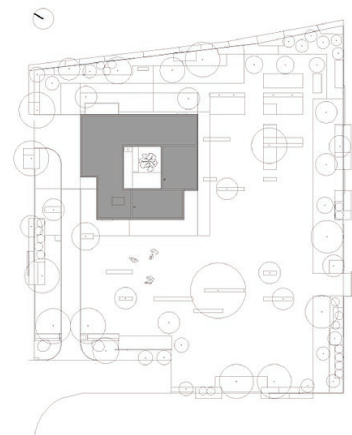
1. np.



2. np.



1. pp.



situácia

Family house in Rusovce