



© Dániel Németh

Social housing

Práter utca 30-32.
H-1082 Budapest, Ungarn

ARCHITEKTUR
Kis Péter Építészműterem

TRAGWERKSPLANUNG
MTM Mérnöki Iroda Kft

ÖRTLICHE BAUAUFSICHT
Hérosz Zrt

LANDSCHAFTSARCHITEKTUR
s73

FERTIGSTELLUNG
2007

SAMMLUNG
Architekturarchiv Ungarn

PUBLIKATIONSdatum
26. Oktober 2008



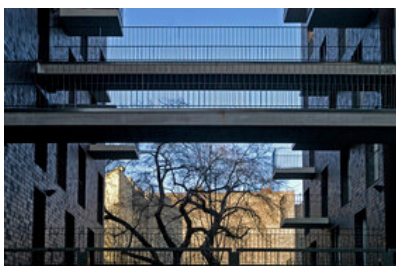
Proportions

The proportions of the building were defined by the neighbouring houses. We felt, we should not erect blocks, that oppress their surroundings. For that reason our main aim was to find a well-proportioned alignment, that wholly complies the building regulations. At the same time we tried to find the optimal number of flats belonging to this volume. The surrounding inspired the modelling of the mass, determining it in two ways: once by the firewalls, which are important characteristic elements of the environment, and also by the severed masses of the neighbouring houses. The completion of these was one of our main tasks. We did not want to build next to these, but to connect to them.

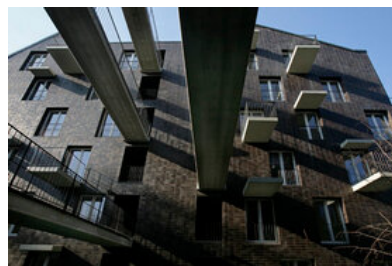
We reacted to the neighbouring buildings' volume in a sensitive way, in order to The city block surrounding the plot was supplemented in two ways. The new building covers the firewalls, but in the meantime the volume recalls their form. The new completes the volumes of the old houses, whereas by the use of brick on the facades, it shows the change with its materiality.

Appreciation

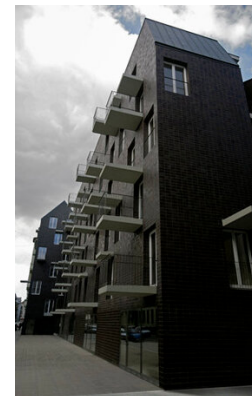
Our explicit intention was to develop not only the plot, but the surrounding block and the wider neighbourhood as well. The alignment of the buildings form – or actually let survive – an inner garden, which is connected visually to the street, as well as to the inner space of the city block. Besides the positive effect of the plantation this garden lets more light into the inner court of the block. In connection to this garden we created public spaces, which integrate with the simple function of the small apartments. The two roof-terraces offer an amazing view over the city with the Gellért hill. The plantation of the inner garden together with the plants on the street form one visually continuous L shaped garden, which also divides the the two parts of the new building.



© Dániel Németh



© Dániel Németh



© Dániel Németh

Social housing

Inner spaces

All of the functions – apartments, parking, public zones – were set along the clear longitudinal strip of communication. This set and the optimal solution of the structural system ensures maximum flexibility.

Efficiency

Besides the modern building methods efficiency in a wider sense is served by reducing the need of maintenance by persistent materials and structures. The building suggests elegance with its proportions and spaces, but besides it is well organised, sparing and space-saving. The cost-value rate of the building was concerned all through the design process. (according to the architect's text)

DATENBLATT

Architektur: Kis Péter Építésztervező (Péter Kis, Csaba Valkai)

Mitarbeit Architektur: Ivett Tarr, Tamás Ükös, Gábor Balázs

Tragwerksplanung: MTM Mérnöki Iroda Kft (Péter Markovits)

Landschaftsarchitektur: s73 (Sándor Mohácsi)

örtliche Bauaufsicht: Hérosz Zrt

Funktion: Wohnbauten

Wettbewerb: 2005

Planung: 2005 - 2007

Ausführung: 2006 - 2007

Grundstücksfläche: 1.218 m²

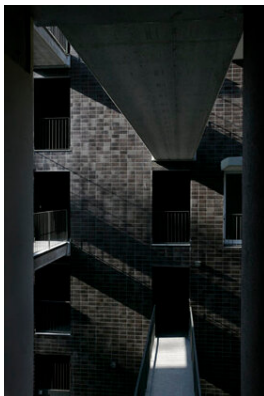
Bebaute Fläche: 660 m²

Baukosten: 2,5 Mio EUR

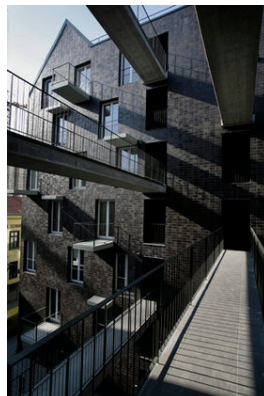
PUBLIKATIONEN

Octogon 2008/2

A10 2008 Jul/Aug



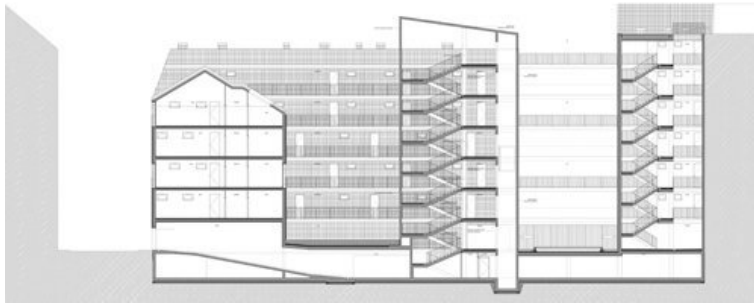
© Dániel Németh



© Dániel Németh

Social housing





Social housing

