



© Zsolt Batár

The plot used to have a little cottage with a huge terrace, the latter a favourite place for friend and family gatherings. The primary function of the new building was to serve as an appropriate setting for such social encounters. The architects were given complete freedom of choice within the loose confines of providing a building capable of fulfilling that function. (architects' text)

Single-family house Budaörs

Szécheny u.
2040 Budaörs, Ungarn

ARCHITEKTUR
ZSK Architects

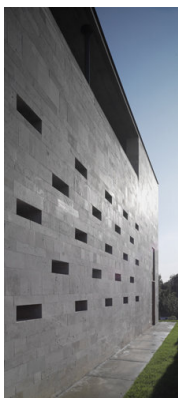
TRAGWERKSPLANUNG
Statiker Kft

ÖRTLICHE BAUAUFSICHT
Profiszervezet Kft

FERTIGSTELLUNG
2006

SAMMLUNG
Architekturarchiv Ungarn

PUBLIKATIONSdatum
17. Mai 2009



© Zsolt Batár



© Zsolt Batár



© Zsolt Batár

Single-family house Budaörs

DATENBLATT

Architektur: ZSK Architects (Zsolt Zsuffa, László Kalmár)

Mitarbeit Architektur: Gábor Nagy, Dániel Vermes

Tragwerksplanung: Statiker Kft (Csaba Harsanyi)

örtliche Bauaufsicht: Profiszervezet Kft

Fotografie: Tamás Bujnovszky

Mechanical engineering - Tamás Fejes, László Szalóky (Kristály Klíma Plusz Kft)

Funktion: Einfamilienhaus

Planung: 2004 - 2005

Ausführung: 2005 - 2006

Grundstücksfläche: 1.139 m²

Nutzfläche: 115 m²

Bebaute Fläche: 170 m²

PUBLIKATIONEN

Családi ház, 2007/2. ,16-25. o. (Budapest)

Alaprajz, 2007/2., 38-41. o. (Budapest)

Magyar Épít?m?vészeti, 2007/1, 19-22. o. (Budapest)

Átrium, 2007/4. ,66-70. o. (Budapest)

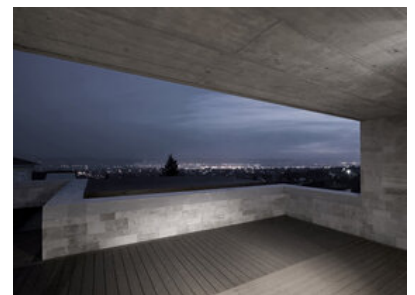
A10, 2007/01-02, 64-65. o. (Amsterdam)



© Zsolt Batár



© Tamás Bujnovszky



© Tamás Bujnovszky

Single-family house Budaörs



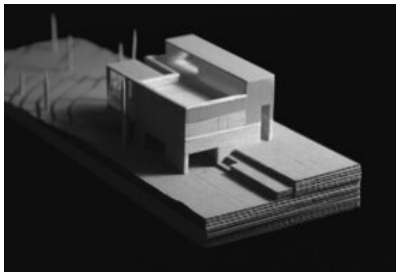
© Tamás Bujnovszky



© Tamás Bujnovszky



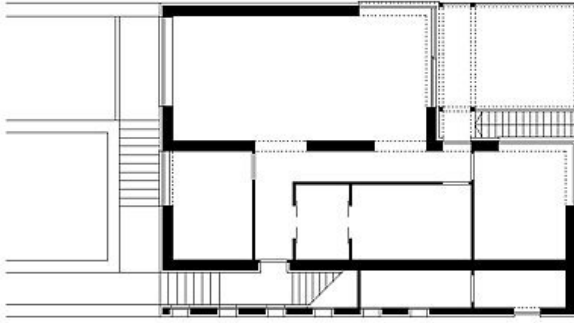
© Tamás Bujnovszky



© ZSK Architects

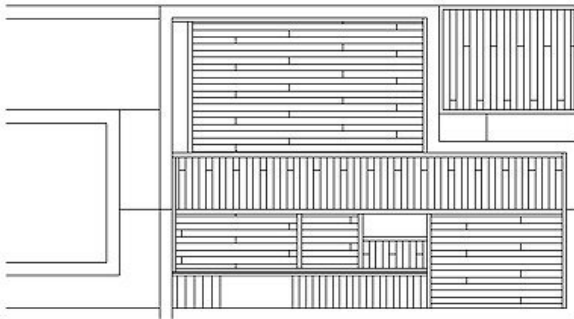
jpg

Single-family house Budaörs



ground floor plan

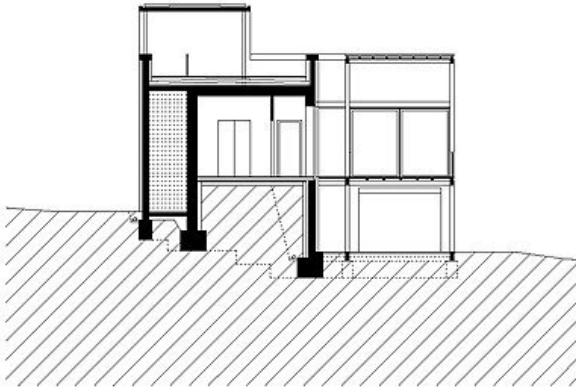
jpg



roof terrace plan

jpg

Single-family house Budaörs



section