



© Tamás Bujnovszky

## Kindergarten and school complex

San Marco u. 48-50.  
1037 Budapest, Ungarn

Kindergarten, elementary school, special school for disabled, student's and children's home, Pedagogy Service

The client – the Municipality of the capitol – wished to place a building-complex on the plot for the education and housing of mentally moderately disabled children. The complexity of the required functions precluded the use of the existing buildings – the turn-of-the-century brick main building and the annexing building from the seventies – without significant architectural intervention. The program claimed the total demolition of the annex, creating the possibility for a foundation of a new architectural image, which is both acceptable and justifiable in this protected surrounding.

In the preserved brick-architecture building the educational units – as the elementary and the special school for the disabled with 14 + 3 classrooms – were housed. In the souterrain special classrooms and a kitchen for educational use; on the ground floor besides the administration and teachers' rooms a library were formed. The upper floors are the territory of the class- and grouprooms, where education is carried on in small groups of 8 children.

Opposite to the old building a new wing was built, with a similar height as the old. It has a kindergarten with a separate entrance on its ground floor, and the housing units on the uppers: the 1st to 3rd floors have 9 units for 90 students, the 4th and 5th floors have 5 units for 40 children. The children home units host 8, the student home units 10 children.

Between the two higher wings the waving, terrain-like edifice encompass the bigger community spaces: the atrium and the adjacent dining hall with the 300 portion kitchen, the sports-hall and the gym-rooms and furthermore a 25 m practice swimming pool. Parking is solved in the underground garage. The dining and the sport facilities are on an semi-underground level, from the ground floor only an insight is possible into these rooms. Besides, the in-between building serves as a connecting link between the educational and the housing wings, a link that also stitches these common spaces and facilities – together with an open-air sports courtyard serving for other common events too. (according to the architect's text)

ARCHITEKTUR  
**Építészkhó**

BAUHERRSCHAFT  
**Municipality of Budapest Capitol**

TRAGWERKSPLANUNG  
**TM Janeda**

ÖRTLICHE BAUAUFSICHT  
**IGN Zrt**

LANDSCHAFTSARCHITEKTUR  
**Katalin Hlatky**

FERTIGSTELLUNG  
**2008**

SAMMLUNG  
**Architekturarchiv Ungarn**

PUBLIKATIONSdatum  
**24. Mai 2009**



© Tamás Bujnovszky



© Tamás Bujnovszky



© Tamás Bujnovszky

## Kindergarten and school complex

## DATENBLATT

Architektur: Építészkhó (Tamás Tarnóczy)  
 Mitarbeit Architektur: Mihály Balázs, Balázs Tatár, Dávid Török  
 Bauherrschaft: Municipality of Budapest Capitol  
 Tragwerksplanung: TM Janeda (János Volkai)  
 Landschaftsarchitektur: Katalin Hlatky  
 örtliche Bauaufsicht: IGN Zrt  
 Fotografie: Tamás Bujnovszky

Mechanical engineering - Zsolt Kálmán  
 Electrical engineering - József Krén  
 Fire safety - Zsolt Mikola  
 Insulation - Judit Pintér

Funktion: Bildung

Wettbewerb: 2003  
 Planung: 2004  
 Ausführung: 2006 - 2008  
 Eröffnung: 2008

Grundstücksfläche: 8.946 m<sup>2</sup>  
 Bruttogeschossfläche: 10.377 m<sup>2</sup>  
 Nutzfläche: 8.727 m<sup>2</sup>  
 Baukosten: 5,5 Mio EUR

## PUBLIKATIONEN

Magyar Épít?m?vészeti 2009/1.



© Tamás Bujnovszky



© Tamás Bujnovszky



© Tamás Bujnovszky

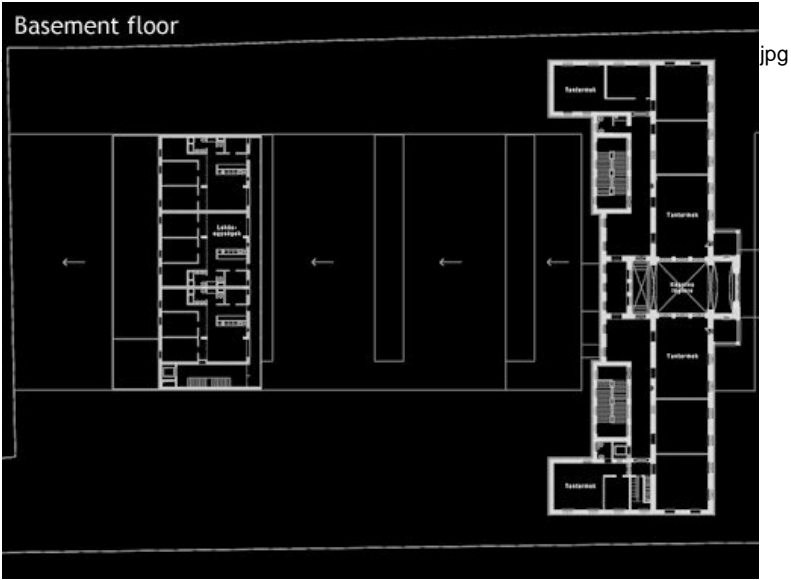
## Kindergarten and school complex



© Tamás Bujnovszky

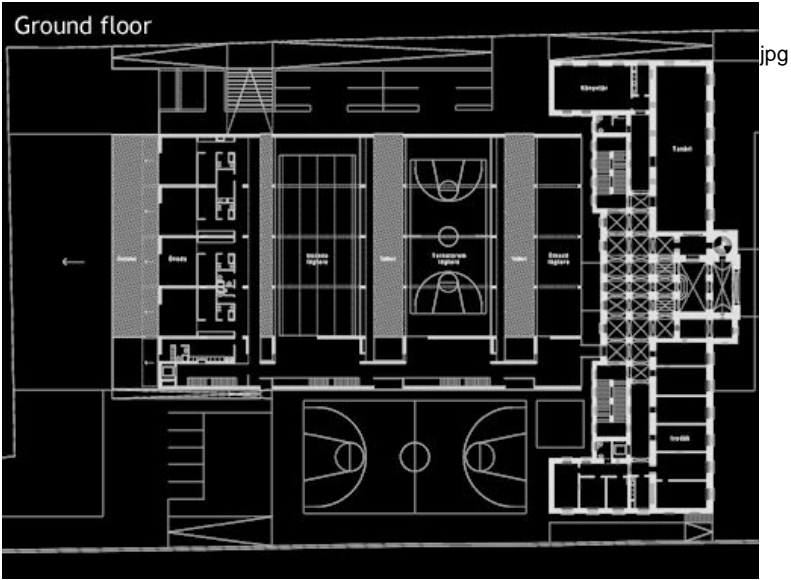


© Tamás Bujnovszky

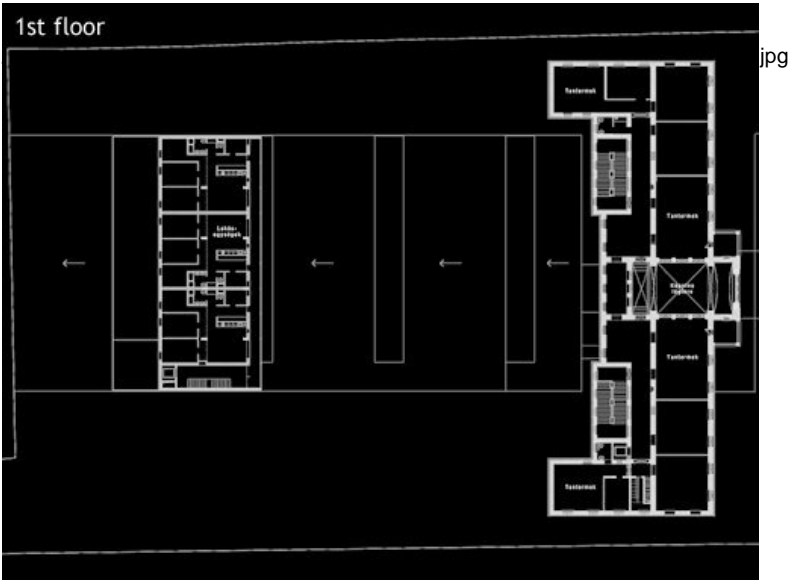


Kindergarten and school complex

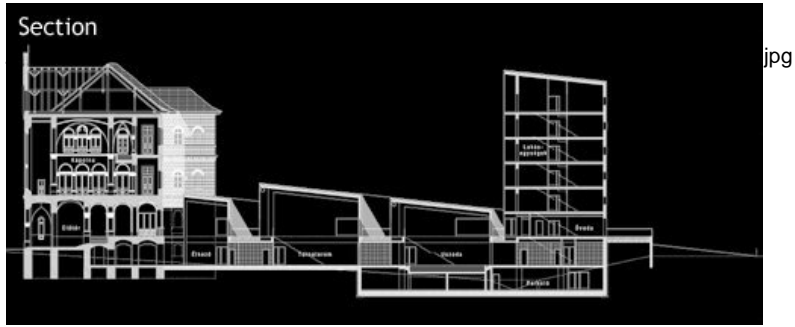
souterrain level plan



ground floor plan



first floor plan



Kindergarten and school complex

longitudinal section