



© György Kaczur

Villa in the Buda hills

II. district
Budapest, Ungarn

ARCHITEKTUR
B13 Építőművész Kft

TRAGWERKSPLANUNG
Róbert Kazsimiérsky

LANDSCHAFTSARCHITEKTUR
Pronatura

SAMMLUNG
Architekturarchiv Ungarn

PUBLIKATIONSdatum
24. Mai 2009



The 2000 m² large estate is an ideal plot not only because of the 10% inclination to the South, but also by its amazing panorama. Such a place is rarely found in Budapest. Since the building program required huge spaces, but the building itself shouldn't become oppressive, part of the rooms were buried into the hill. This solution helped us to have a calm and modest composition of the building.

The covered atrium takes the place of the center; this is the representative point to welcome guests, but also a solution to gather more light into the heart of the house.

During planning there were some important demands like perfect transparency, airiness and generosity of the spaces; to emphasize this we used large transparent surfaces outside and inside as well.

The ground floor has the representative role in the everyday. The centre of the social life is in the living room, partly in the elegant kitchen, and partly in the lounge, which has a more relaxed atmosphere. The ground floor have simple, but practical built-in furnitures, they provide representativeness and usefulness in the same time. The kitchen and the lounge spaces are connected by little architectural signs, use of materials and with the treatment of lights.

Upstairs is the place for the intimate life of the family., but the atmosphere is elegant, just like downstairs. By using the capability of the plot this level has also direct connection to the garden, towards the little forest behind it. There is one „master-bedroom“ and several smaller bedrooms for the family and the guests. The functional arrangement was signed by the furniture and the materials: the parents' wardrobe is a



© György Kaczur



© György Kaczur



© György Kaczur

Villa in the Buda hills

good example for this, where the back-wall is the acid-treated glass-wall of the atrium. The materials upstairs are smoother - textile and leather wall coverings -, this shows the difference between the social sphere and the intimate sphere.

During the planning we were attentive to the owner's interests and the possibilities, as a result the interior design is a continuity of the architectural ideas. (according to the architect's text)

DATENBLATT

Architektur: B13 Építőművész Kft (István Bényei)

Mitarbeit Architektur: Balázs Ivony

Tragwerksplanung: Róbert Kazsimiérsky

Landschaftsarchitektur: Pronatura (Judit Tóth)

Funktion: Einfamilienhaus

Planung: 2007

Fertigstellung: 2008

Grundstücksfläche: 2.013 m²

Nutzfläche: 524 m²

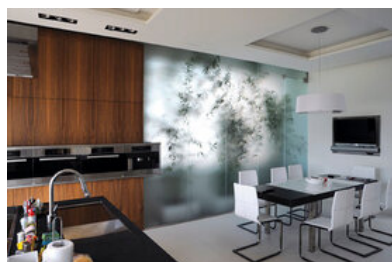
Bebaute Fläche: 201 m²

PUBLIKATIONEN

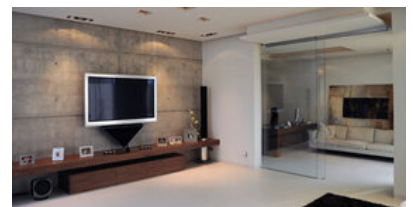
Szép házak 2009



© György Kaczur



© György Kaczur



© György Kaczur