



© Attila Polgár

## II. Rákóczi Ferenc High School

Keleti Károly u. 37.  
1021 Budapest, Ungarn

ARCHITEKTUR  
**Építész Stúdió**

BAUHERRSCHAFT  
**Municipality of II. district, Budapest**

TRAGWERKSPLANUNG  
**Építész Stúdió**

LANDSCHAFTSARCHITEKTUR  
**Garten Kft**

FERTIGSTELLUNG  
**2005**

SAMMLUNG  
**Architekturarchiv Ungarn**

PUBLIKATIONSdatum  
**31. Mai 2009**



In 2002, the 2nd district local government of Budapest announced a limited design competition for the reconstruction of the building. In our winning design, we opted for new construction, believing that new is an organic continuation of old. We preserved the entire street-front wing of the building as being the most important section from both architectural and emotional points of view. The new wings take the place of the demolished ones, each of them being appropriately oriented. Instead of being closed from the north, the development remains open toward the hill that sort of runs into the open school yard.

Another key issue of spatial distribution was the location of the sizeable gym. The Detailed Land Use Plan would have also allowed an underground position at the upper athletic field, however, as regards the entire plot and the hillside, it was important to avoid considerable terrain changes due to the extension. Therefore, the gym is placed in the embrace of the courtyard wings, thus leaving the large slope behind the old school building untouched. Even the adjacent empty plot is only filled in with a wing that is one tract deep to leave the already established lawn area and the well-cared garden intact.

The school is accessible from the Keleti Károly street. The remodeled old gym serves as a reception hall. Upon demolishing the parapet walls of the two old large-size windows facing the street, a quasi-arcade has emerged in front of the new airlock, resulting in a transitory space through widening of the narrow sidewalk.

The reception hall is connected to another atrium-like lofty part of the vestibule from where the rooms and traffic routes of the entire school are well observable.

As a result of terrain conditions, the sports ground and the inner courtyard on top of the gym are interconnected by a bridge. Also suitable for holding outdoor lessons, the recreational area to be established in the intensive green area of the empty plot will be accessible from the first floor of the new street-front wing.

The romantic style architecture of the street-front wing was preserved and renovated. The architecture of the new building is predominated by two materials: used brick and roof tiles.

The bricks from the demolition work re-emerge as exterior cladding materials. In addition to being an economical solution, it is a meaningful spiritual link between old and new, thus highlighting stability and continuity. (architect's text)



© Attila Polgár



© Attila Polgár



© Attila Polgár

## II. Rákóczi Ferenc High School

### DATENBLATT

Architektur: Építész Stúdió (Ferenc Keller, Benedek Sólyom)

Bauherrschaft: Municipality of II. district, Budapest

Tragwerksplanung: Építész Stúdió (Attila Hernád)

Landschaftsarchitektur: Garten Kft (István Steffler)

Funktion: Bildung

Wettbewerb: 2002

Planung: 2003 - 2004

Ausführung: 2004 - 2005

Eröffnung: 2005

Grundstücksfläche: 8.397 m<sup>2</sup>

Bruttogeschossfläche: 8.881 m<sup>2</sup>

Nutzfläche: 7.587 m<sup>2</sup>

Baukosten: 5,5 Mio EUR

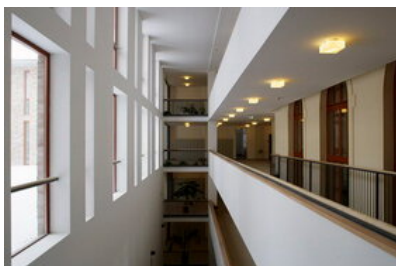
### PUBLIKATIONEN

Magyar Építészvészet 2006/2 pp.8-15

### AUSZEICHNUNGEN

Budapest Architecture Award of Excellence Certificate 2006

Media Architecture Award 2006



© Attila Polgár

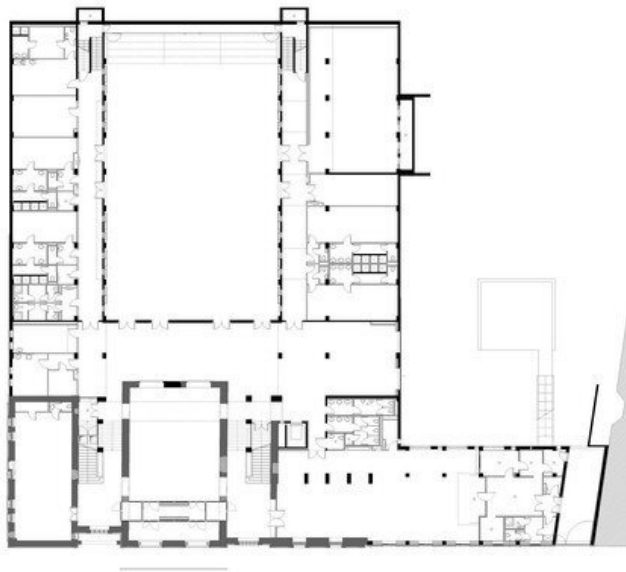


© Attila Polgár

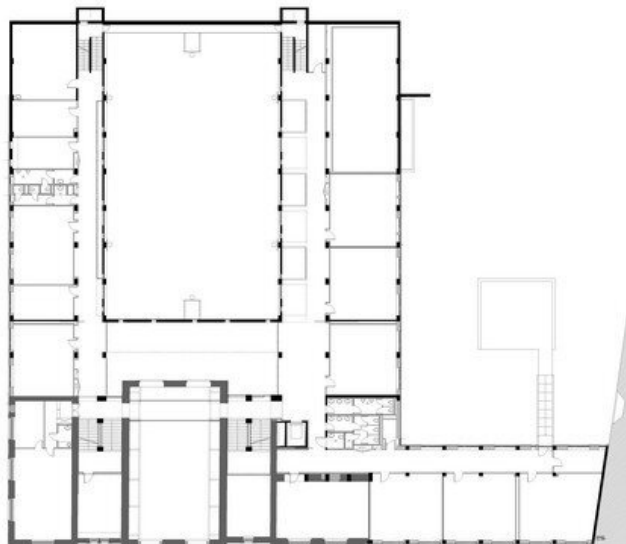


II. Rákóczi Ferenc High School

street elevation



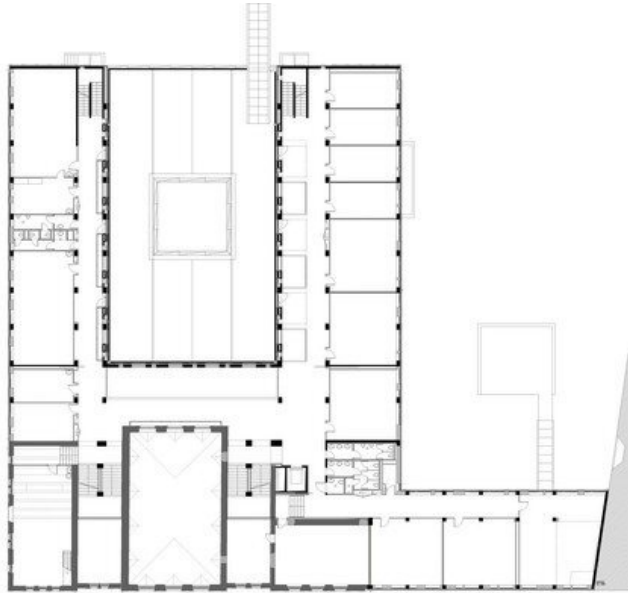
ground floor plan



first floor plan

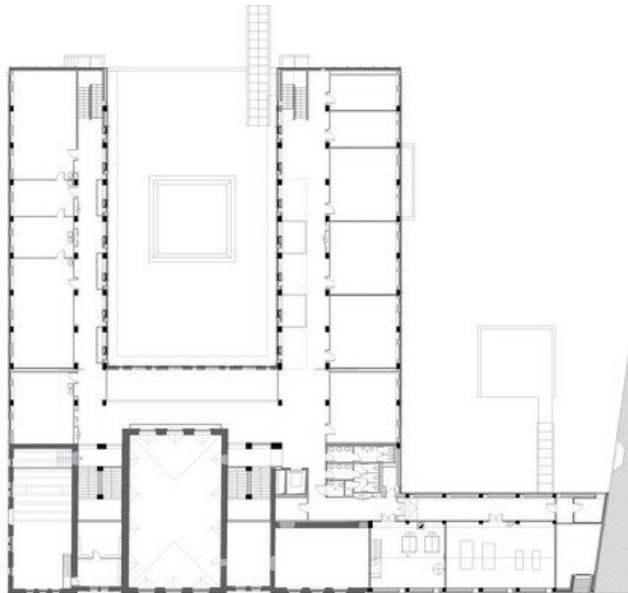
jpg

## II. Rákóczi Ferenc High School



third floor plan

jpg



fourth floor plan

jpg



section