



© Lukáš Kordík

Exit MM + Charlie Brown

Budovateľská 23
Bratislava, Slovakia

ARCHITEKTUR

Gutgut

Roman Halmi

Peter Jurkovič

Lukáš Kordík

Štefan Polakovič

Katarína Beladišová

SAMMLUNG

Architekturarchiv Slowakei

PUBLIKATIONSdatum

03. Juni 2009



The interior of the EXIT modelling agency on Budovateľská Street has been designed by GutGut studio. As such it breaks with the traditional styles of local architecture dictated by the modernist traditions of the last century. The studio's architects had already arranged an interior for the agency whilst still residing in the former Bratislava thread factory. They highlighted the industrial hall's weary appearance and aesthetically mixed quality design with junk furniture, a trend that is gaining in popularity worldwide. They approached the agency's new residence in a similar manner, stripping the former residential house of the 1950s to its primary construction level. The modelling agency together with Bratislava's boutique hotel Albrecht are two shining Slovak examples of the introduction of these unconventional trends toward exposing pure constructions, which fundamentally contradict the traditional work of the interior designer. Peter Szalay



© Lukáš Kordík



© Lukáš Kordík



© Lukáš Kordík

Exit MM + Charlie Brown

DATENBLATT

Architektur: Gutgut, Roman Halmi, Peter Jurkovi?, Lukáš Kordík, Štefan Polakovi?,
Katarína Beladi?ová

Funktion: Innengestaltung

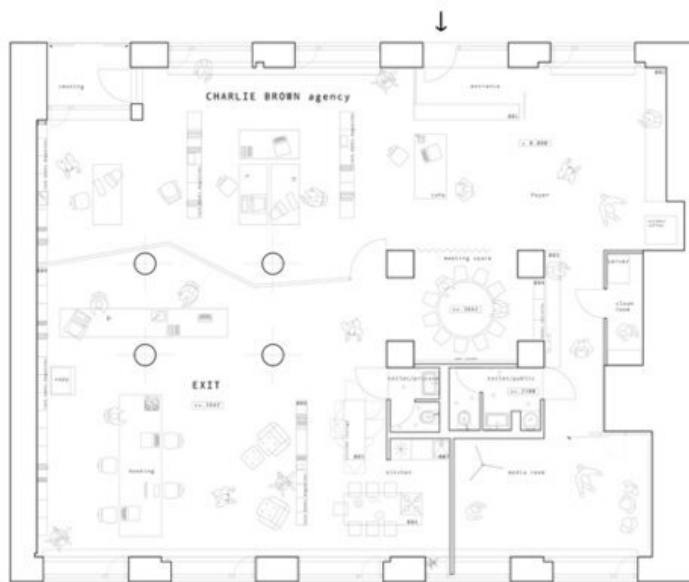
Planung: 2008

Fertigstellung: 2008

Nutzfläche: 240 m²

PUBLIKATIONEN

SZALAY Peter: Primárna vrstva luxusu. ARCH Vol. 14. 2009, no. 4. p. 20-23.



Exit MM + Charlie Brown